

## MINI-TUBOBLAST

The MINI-TUBOBLAST device has been designed for the internal sandblasting of small diameter pipes. It consists of a Venturi nozzle combined with a tungsten carbide deflector, which conveys the abrasive with a 360° conical jet directly onto the wall of the pipe to be treated.

The smallest pipes, up to 20 mm, are treated with the aid of centering collars.

The MINI-TUBOBLAST device can be powered by our sandblasting machines and is complete with one steel rod, length 6m and 3/8" diameter.

In addition to the abrasive transport function, the rod will be held by the operator for the advancement inside the pipe and is complete with fittings for connection to the sandblaster.

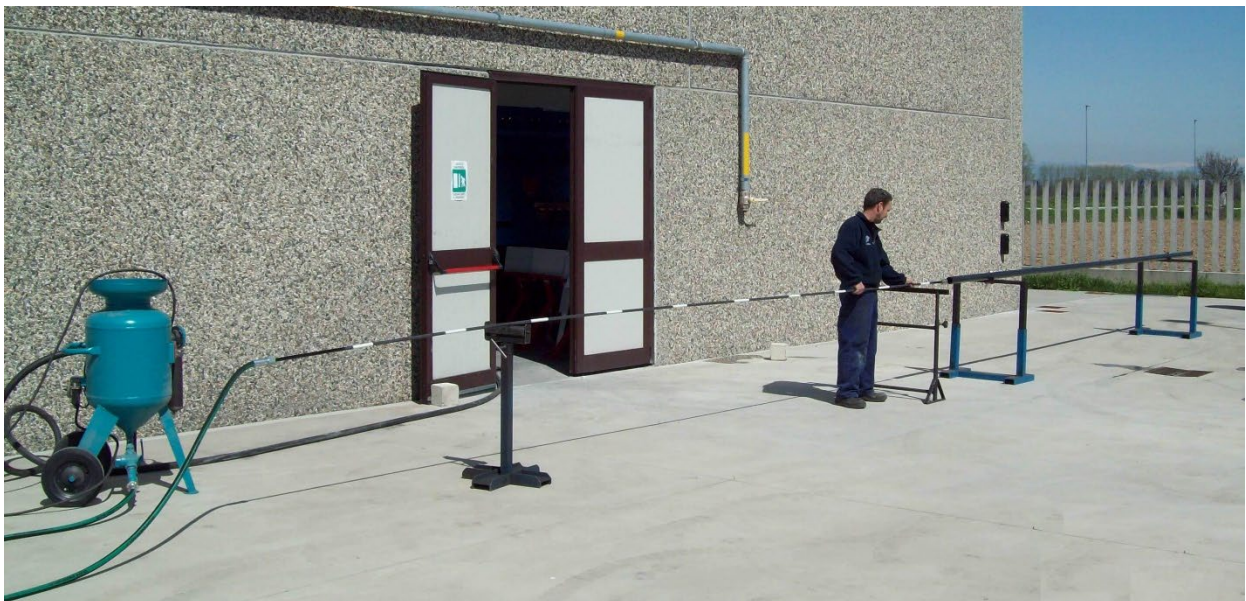


### **TECHNICAL CHARACTERISTICS**

- Pipe internal diameter : min. 20 mm - max 60mm
- Required compressed air : 2250 l/min at 7 bar
- Abrasive to be used : Steel grit
- Maximum grit size : 0,5 ÷ 0,6mm
- Recommended diameter for abrasive hose : 25mm internal

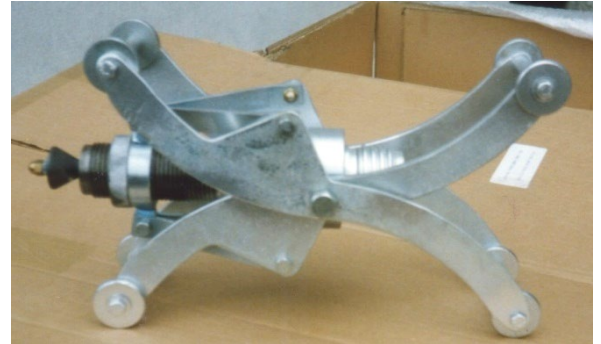


*MINI-TUBOBLAST with centring rings*



## TUBOBLAST

This device is designed for internal sandblasting of small diameter pipes. The sandblasting is obtained by means of an empty cone abrasive jet, generated by the shape of the internal distributor and the presence of an external circular deflector. The components in contact with the abrasive are made of hard metal. The TUBOBLAST can be connected to our compressed air sandblasters VSA 200 or VSA 250 type.

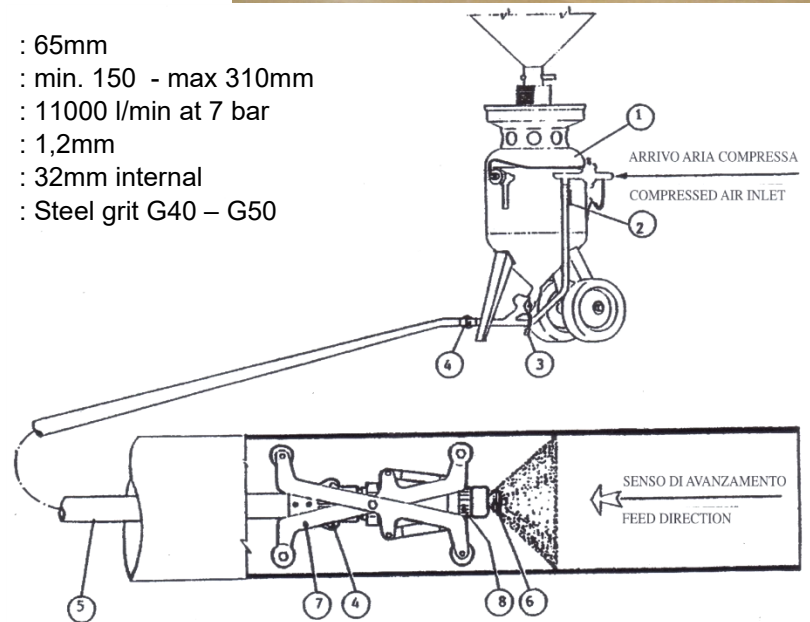


### TECHNICAL CHARACTERISTICS

- Minimum pipe internal diameter without centering device : 65mm
- Pipe internal diameter with centering device : min. 150 - max 310mm
- Required compressed air : 11000 l/min at 7 bar
- Maximum grit size : 1,2mm
- Recommended diameter for abrasive hose : 32mm internal
- Abrasive to be used : Steel grit G40 – G50

### CONNECTION SCHEME

- 1) Sandblasting machine
- 2) Compressed air regulation valve
- 3) Abrasive regulation valve
- 4) Quick connector
- 5) Abrasive hose
- 6) Nozzle
- 7) Centering device
- 8) Ring for centering device regulation



## TUBOBLAST SENIOR (Cod. 600-153)

The device consists of a set of boron carbide parts which convey the abrasive with a 360° conical jet directly onto the internal wall of the pipe to be treated.

- Pipe diameter : min. 80 – max 400mm
- Required compressed air : 16000 l/min at 7 bar
- Abrasive to be used : Steel grit, corundum, garnet

The TUBOBLAST SENIOR is complete with a centering device, which is not required for sandblasting of pipes with internal diameter of less than 150mm and up to 80mm.



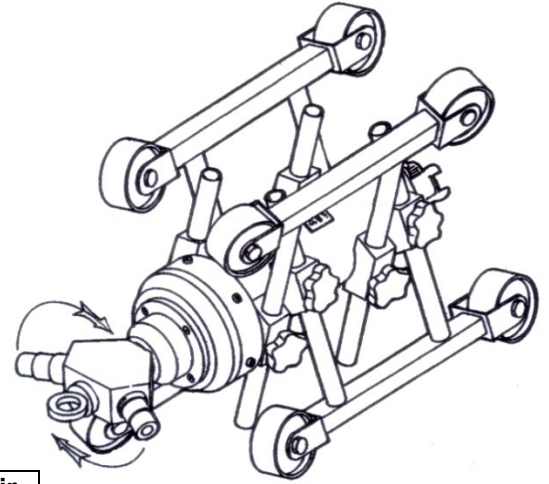
## ROTOBLAST

Two-way rotary head device for internal sandblasting of pipes with diameter range between 350 and 1100mm.

The rotation of the nozzle is provided by a pneumatic motor applied to a gearbox.

The special shape and sturdiness of the centering trolley provide to the rotating head a perfect stability of advancement inside the pipe.

Large radius curved pipes can also be sandblasted with this system.



Pipe diameter	Nozzles diameter	Required compressed air at 7 Bar pressure
From 350 to 800 mm	8 x 100 mm	9000 l/min
From 800 to 1100mm	8 x 150mm	9000 l/min

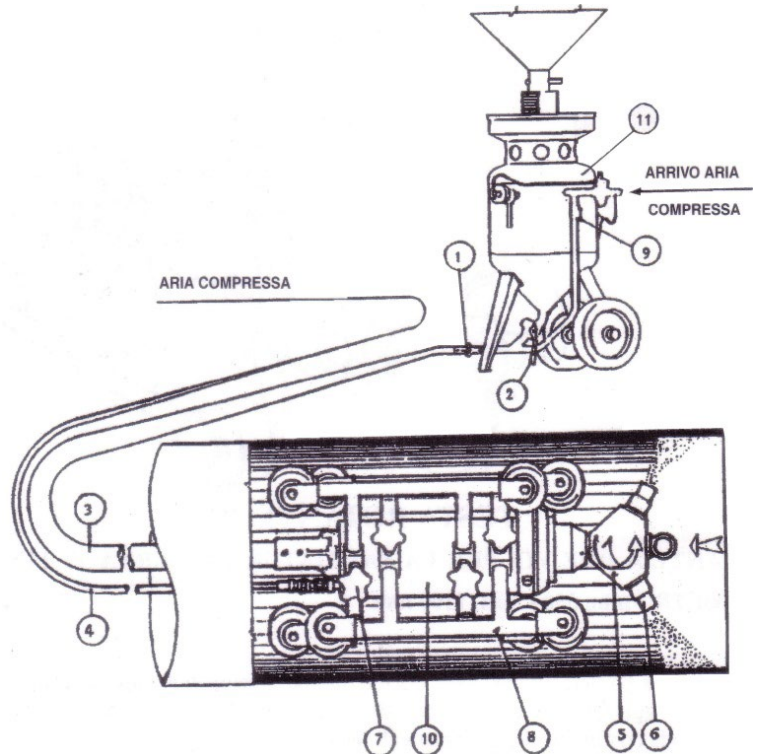
Abrasive to be used: steel grit

Upon request, the rotating head can be supplied complete with a special kit for sandblasting pipes with a minimum diameter of 250mm.



### CONNECTION SCHEME

- 1) Quick connector
- 2) Abrasive regulation valve
- 3) Abrasive hose
- 4) Compressed air hose
- 5) Nozzles head
- 6) Tungsten carbide nozzles
- 7) Stop knob
- 8) Centering trolley
- 9) Compressed air regulation valve
- 10) ROTOBLAST device
- 11) Compressed air sandblasting machine



## MOTORIZED ROTOBLAST

Device for internal pipe sandblasting with motorized nozzle rotation and advancement, complete with:

- rotation mechanism with pneumatic motor and gearbox
- compressed air inlet filter
- rear seal group for rotating shaft
- 2-way nozzle holder head with flow diverter in tungsten carbide
- two  $\varnothing 8 \times 75\text{mm}$  tungsten carbide nozzles
- centering trolley with motorized feed for pipe internal diameter min. 350 – max 1000mm.

Abrasive to be used: steel grit



The trolley is complete with:

- front axle powered by pneumatic gearmotor
- idle rear axle
- device with centering wheels to keep the ROTOBLAST on the pipe axis.

The supply includes a control console complete with valves for activating the rotation, trolley forward with speed regulation, and return without speed regulation.



## BOABLAST

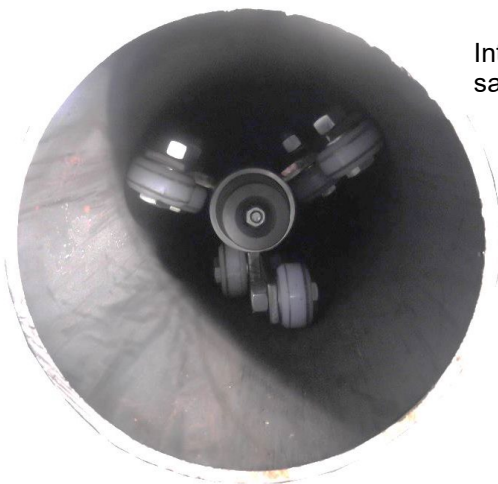
### Device for internal sandblasting of curved pipes



This device consists of a series of boron carbide parts which convey the abrasive with a 360° conical jet directly onto the internal wall of the pipe to be treated. The special centering trolley, designed for sliding in curved pipes, allows its movement into bends having a minimum radius of 1.5 times the pipe diameter. The BOABLAST is complete with 40mm diameter and 6m length abrasive hose, fitted with with 1"1/2 F threaded end connection, suitable for the connection of the nozzle holder of a sandblasting lance.

#### **TECHNICAL CHARACTERISTICS**

- Pipe diameter range : min. 160 - max 500mm
- Required compressed air : 9.000 l/min at 7 bar pressure
- Recommended abrasive hose : dia. 25x40 mm
- Recommended abrasive : - steel grit or corundum (sandblasting of carbon steel pipes)  
- corundum or stainless steel grit (sandblasting of stainless steel pipes)



Internal detail of the pipe before the sandblasting with BOABLAST



Internal detail of the tube after the sandblasting with BOABLAST